



18 Old Oak Common Lane  
Acton  
London  
W3 7EL  
T 020 8749 9798  
E sales@churchillmathesons.com  
www.churchillmathesons.com

Churchill & Mathesons

East Acton Lane, London, W3 7HU

£553 Per Week



**KEY FEATURES:**

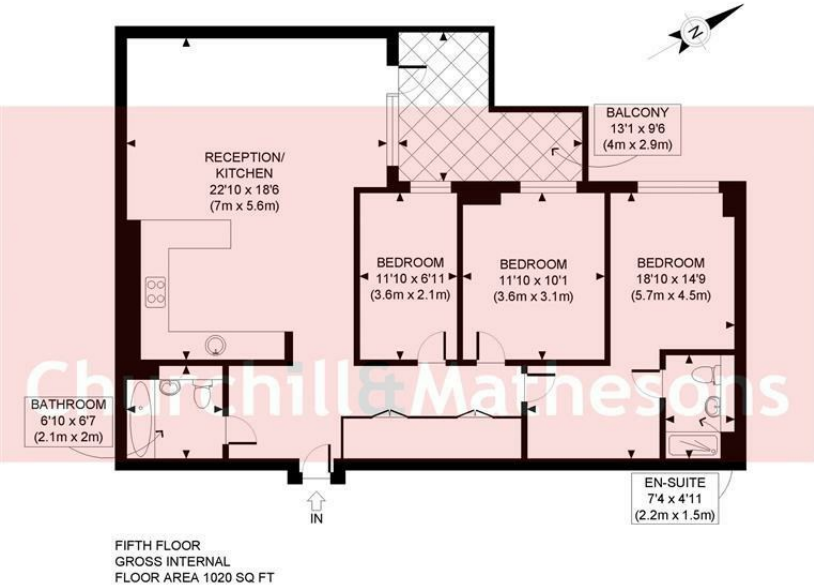
- 3 Bedroom apartment
- 2 Double and 1 single sized bedrooms
- Master bedroom with ensuite and built in wardrobe
- Excellent location with an array of transport links
- FURNISHED/UNFURNISHED ~ AVAILABLE 4 SEPTEMBER

An unique opportunity to rent this spectacular and brand new 3 bedroom apartment located on the 11th floor in \* This Iconic building in Acton built by Barratt Homes

- \* 2 Double and 1 single sized bedrooms
- \* Master bedroom with ensuite and built in wardrobe
- \* Modern fully fitted kitchen with integrated appliances
- \* Open plan reception room with balcony doors opening to a covered balcony
- \* Stylish bathroom
- \* Excellent location with an array of transport links

FURNISHED/UNFURNISHED ~ AVAILABLE NOW

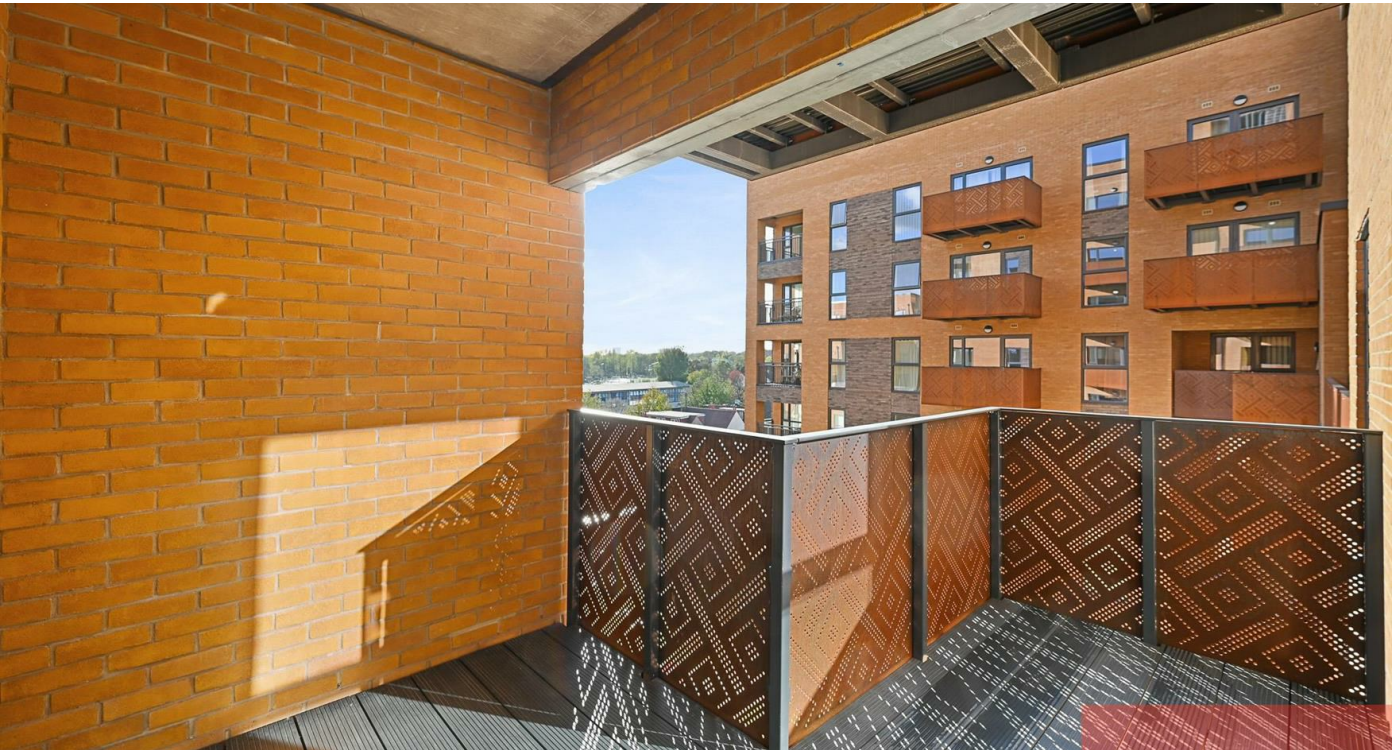




APPROX. GROSS INTERNAL FLOOR AREA: 1020 SQ FT/ 95 SQM

PROPERTY PHOTO PLANS  
ONE STOP SHOP FOR PROPERTY MARKETING

This plan is for illustrative purposes only and should be used as such by any prospective client. Whilst every attempt has been made to ensure the accuracy of the Floor Plan contained here, measurements of the doors, windows, rooms and any other items are approximate and no responsibility is taken for any errors, omissions, or misstatement. The services, systems and appliances shown have not been tested and no guarantee as to the operability or efficiency can be given.



Energy Efficiency Rating

|   | Current                 | Potential |
|---|-------------------------|-----------|
| Very energy efficient - lower running costs |                         |           |
| (92 plus) A                                 |                         |           |
| (81-91) B                                   |                         |           |
| (69-80) C                                   |                         |           |
| (55-68) D                                   |                         |           |
| (39-54) E                                   |                         |           |
| (21-38) F                                   |                         |           |
| (1-20) G                                    |                         |           |
| Not energy efficient - higher running costs |                         |           |
| England & Wales                             | EU Directive 2002/91/EC |           |

Environmental Impact (CO<sub>2</sub>) Rating

|   | Current                 | Potential |
|---|-------------------------|-----------|
| Very environmentally friendly - lower CO <sub>2</sub> emissions |                         |           |
| (92 plus) A   |                         |           |
| (81-91) B   |                         |           |
| (69-80) C   |                         |           |
| (55-68) D   |                         |           |
| (39-54) E   |                         |           |
| (21-38) F   |                         |           |
| (1-20) G  |                         |           |
| Not environmentally friendly - higher CO <sub>2</sub> emissions |                         |           |
| England & Wales   | EU Directive 2002/91/EC |           |

Whilst every effort is made to give a fair description, the accuracy of these particulars is not guaranteed, neither do they constitute an offer or contract.

**CHURCHILL & MATHESONS ESTATE AGENTS** have not tested any apparatus, equipment, fitting or services and so cannot verify that they are in working order. The buyer is advised to obtain verification from their solicitor or surveyor. Measurements are correct to within +/-6 A sonic tape is used. None of the statements contained in these particulars or any of our properties are to be relied upon as a representation of fact.